

What concrete policies can streamline migrant integration, empowering and engaging newcomers in Europe's cities? CONNECTION will determine, deliver and implement the answers to this question. Peer-learning on integration around integration strategies, gender, employment and one-stop-shops will accompany concrete EU-funded policy implementation in seven of the 14 cities. Eight further cities can join visits, as well as other organisations and levels of government, and eight integration champions are trained to train others in integration strategies. CONNECTION stands for CONNEcting Cities Towards Integration action – **so, are you ready to connect?**

Outputs



7 new policies implemented in 7 EU cities through ¼ million euro of EU grants

14 staff exchanges implemented in 14 EU cities



14 thematic cluster visits



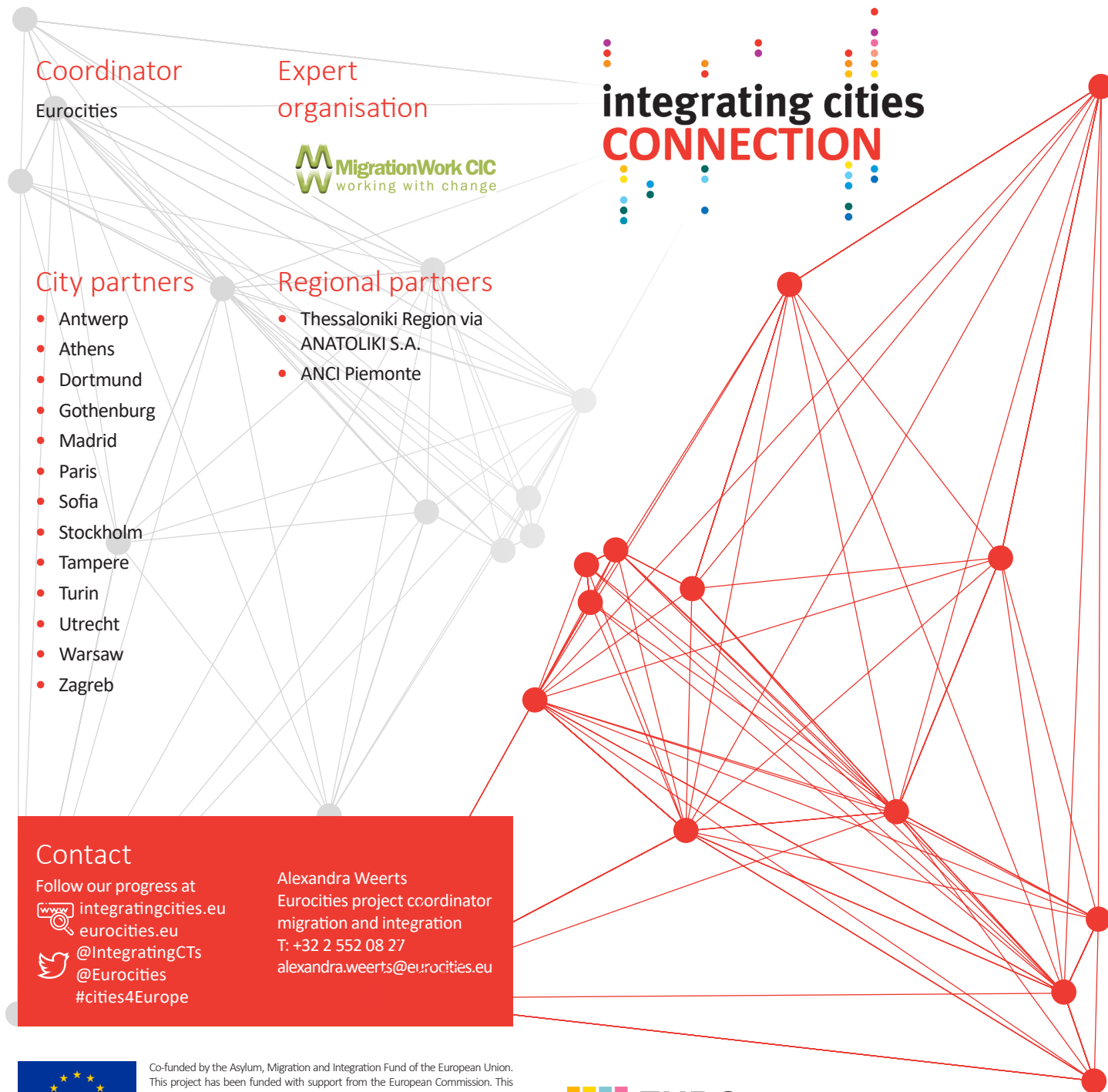
8 integration champions

4 new how to guides: key recommendations for change



4 Integrating Cities videos illustrating key points from the guides

Integrating Cities Conference X (October 2022): multi-stakeholder dialogue involving EU officials and representatives from local governments, volunteer organisations and migrant groups



Coordinator

Eurocities

Expert organisation



integrating cities CONNECTION

City partners

- Antwerp
- Athens
- Dortmund
- Gothenburg
- Madrid
- Paris
- Sofia
- Stockholm
- Tampere
- Turin
- Utrecht
- Warsaw
- Zagreb

Regional partners

- Thessaloniki Region via ANATOLIKI S.A.
- ANCI Piemonte

Contact

Follow our progress at
www.integratingcities.eu
eurocities.eu
[@IntegratingCTs](https://twitter.com/IntegratingCTs)
[@Eurocities](https://twitter.com/Eurocities)
[#cities4Europe](https://twitter.com/cities4Europe)

Alexandra Weerts
 Eurocities project coordinator
 migration and integration
 T: +32 2 552 08 27
alexandra.weerts@eurocities.eu



Co-funded by the Asylum, Migration and Integration Fund of the European Union. This project has been funded with support from the European Commission. This publication reflects the views only of the author, and the European Commission cannot be held responsible for any use which may be made of the information contained therein.

© Eurocities 2020



What is CONNECTION?

European cities want to implement best practices in:

A strategic approaches to integration, participation and interaction

B gender in integration policy

C pathways to migrant employment

D one-stop-shops for integration needs

In CONNECTION, 14 core cities and 8 fellow cities work in clusters on each theme with other stakeholders. Through workshops, sight visits, on-the-ground training, action planning and implementation, they develop best practices in integration and overcome shared challenges. Seven of the cities use the project to implement a new integration policy that brings concrete and immediate benefits to migrants and their receiving communities. Each cluster develops practical tools for other cities to achieve the same.

CONNECTION also trains eight 'integration champions', city staff equipped to train others in integration best practices. These champions hold two international workshops during the project and keep the results alive once the project comes to an end.

Led by Eurocities, the network of major European cities, CONNECTION builds on the success of past projects (VALUES, CITIES GROW, MIXITIES, DIVE, INTI-Cities, ImpleMentoring) that together addressed the gaps in the implementation of the Integrating Cities Charter. This charter expresses cities' commitment to migrant integration.

Eurocities Integrating Cities Charter

The Integrating Cities Charter identifies the duties and responsibilities of European cities as policy makers, providers of services, employers and buyers of goods and services to provide equal opportunities for all residents, to integrate migrants and to embrace the diversity of their populations.

see: www.integratingcities.eu

Make the CONNECTION!

Integration strategies

Integration cannot happen without real contact between locals and migrants. We need policy that can open the space of possibility in which people can discover and learn from each other.

Let's get people meeting and mixing

Gender

Different cultural groups come with different expectations and experiences of gender. Neglecting gender is to leave some of the most vulnerable migrants unheard.

Gender shapes the migration experience, so it must shape migration policy

Why do European cities work with each other for integration?

Working city-to-city is the most fruitful way of finding solutions for the local context. We all have the same aim in view.

– Anna Lisa Boni, secretary general, Eurocities

Employment

Migrants arrive with skills that can and do contribute to their receiving communities. If barriers are in place that stop them from using those skills, everyone is worse off.

I have skills – let me use them

One-stop-shops

Being a migrant doesn't mean you want to roam all over the city

Every service at the same location. This simple concept makes a huge difference to newcomers trying to get oriented, and helps cities to deliver services effectively.

